

SEN(D) & EHCP Health Input In Barnet

Head of Joint Children's Commissioning
Unit &

Barnet Health Provider Managers

27th April 2017

Barnet SEND Conference - NLBP

Barnet Developmental Paediatrics Team

Dr Katalin Schneider
Consultant Community Paediatrician
Medical Advisor for SEND in Barnet

Context in Barnet

- Historically never had a single 'Child Development Centre' [CDC] (administrative base and clinical setting) with a range of professionals involved in assessment and management of children with developmental disorders
- Relevant professionals employed in several separate agencies & based at various locations across Barnet (+ use of different electronic systems)

Conflicts and Confusion between Parents and Systems



Paediatrics

Royal Free London 
NHS Foundation Trust

Barnet, Enfield and Haringey 
Mental Health NHS Trust

CAMHS

A University Teaching Trust

Central London Community Healthcare 
NHS Trust
Your healthcare closer to home

**Physio
& OT**

East London 
NHS Foundation Trust

SLT


BARNET
LONDON BOROUGH

— with —


Cambridge Education

Specialist Teachers, BEAM,
Preschool Teachers

“Barnet Child Development Service”

Multi-agency collaboration involving:

- Developmental Paediatrics (Community Paediatrics)
- Physiotherapy
- Occupational Therapy
- Speech & Language Therapy
- Community Nursing
- Coordination with LEA Specialist Teaching Services & Early Support Services

“Improving
services for
those who need
them most”

Referrals

- **Single Referral Form** to all above mentioned children's services (except for CAMHS)
- Weekly **Multi-Agency Intake Meeting**
- Paediatricians & CAMHS also have joint meetings

Criteria:

- **Resident** within the London Borough of **Barnet**
- **Age 0-19 years**
- **Any developmental concern**



Improving
coordination
and access to
services

Developmental Paediatrics - Referrals

- **Referrals** accepted from GP, other health professionals or educational professionals.
- **Criteria:**
 - <7years – neurodevelopmental concern
 - CYP with complex disability (0-18/19yrs)
 - School age children with unexplained LD (note: no cognitive assessment in our service)
 - Medical assessment for EHCP

Role of Developmental Paediatrician

- Assessment and Diagnosis of medical and neurodevelopmental conditions
- Investigations and Referrals
- Medical management and Review of children with long term and disabling conditions
- Healthcare plans specifying the type and level of support required to meet the medical needs of pupils with medical conditions

Conditions - examples

- Genetic disorders/ Syndrome diagnosis
- Motor disorders – cerebral palsy, neuromuscular disorders, musculoskeletal conditions
- Acquired brain injury (trauma, tumor, stroke, inf.)
- Communication disorders
- Autism spectrum condition (children < 7 yrs)
- Global developmental delay / Learning disability
- Epilepsy + developmental problems
- Behavioural problems and attention & concentration difficulties (children < 5 yrs)
- Vision and hearing difficulties + developmental problems

Contact details

Child Health HQ

Edgware Community Hospital

Burnt Oak Broadway, Edgware, HA8 0AD

Telephone: 020 7794 0500 ext 26457

Appointments: 0203 758 2420

(Clinics also held at Barnet General Hospital and Oak Lane Clinic)

Thank you for your attention!

Central London Community Healthcare 
NHS Trust

Your healthcare closer to home



East London
NHS Foundation Trust

Special Educational Needs




& Disability

[illegible]

Barnet, Enfield and Haringey 
Mental Health NHS Trust

A University Teaching Trust



Royal Free London 
NHS Foundation Trust

NHS Foundation Trust



Barnet
Clinical Commissioning Group

Services provided by
Central London Community
Healthcare

Pam Mitcham

pmitcham@nhs.net;

Who are we?

- **Barnet children continuing care**
- Complex Care Team
- Special School Nursing Service
- **Barnet children physical therapies service**
- Occupational Therapy
- Physiotherapy
- Orthotics

Children Continuing Care

- **Complex Care Team**

- Team trained children nurses & healthcare support workers
- Assessments of children for NHS funded continuing care packages
- Lead professional role
- Provision of complex medical equipment & supplies

- **Special School Nursing Team**

- Specialist support in schools
- Healthcare plans
- Training

Occupational Therapy

- Our children's occupational therapy team caters for children aged from 0 to 19 years who have a wide range of disabilities, disorders and delays including:
 - physical disability
 - sensory needs
 - profound and complex learning disabilities
 - motor coordination difficulties
- We offer intervention to children on a one to one basis or in a group setting, depending on what is appropriate. Our children's occupational therapy team work in children's homes, health centres, nurseries and schools.

Physiotherapy

- Our children's physiotherapy team works with children with neurodevelopmental and orthopaedic motor difficulties from birth until they leave school.
- We provide specialist assessment, advice and intervention with a neuro developmental approach to assist children with their physical function with regard to positioning, movement and balance, to enable them to achieve their optimum physical function/potential.
- The team works in a variety of locations
 - Schools / Nurseries both mainstream & special schools
 - Home visiting
 - Clinics (both at Oak Lane Health Centre & Edgware Community Hospital)

Orthotics Service

- Orthotic service provides specialist supplies and fittings to support lower limb function.
- Provided for both adults and children in Barnet
- Based at Oak Lane Health Centre
- Outreach clinics held in some of the special schools

Referral Pathway

- **For Children Continuing Care Team & Physical Therapies services**
- **Through the Child Development Service referral form**
- **Web address**
- **www.barnet.gov.uk/child-development-service**
- **Orthotic Service**
- **The service will accept referrals for children and adults who live, or are registered with a GP, in Barnet.**
- **More information available on the CLCH web site**
- **www.clch.nhs.uk/services**



Speech and Language Therapy for children and young people in Barnet

Marion Neuman & Tom Bailey

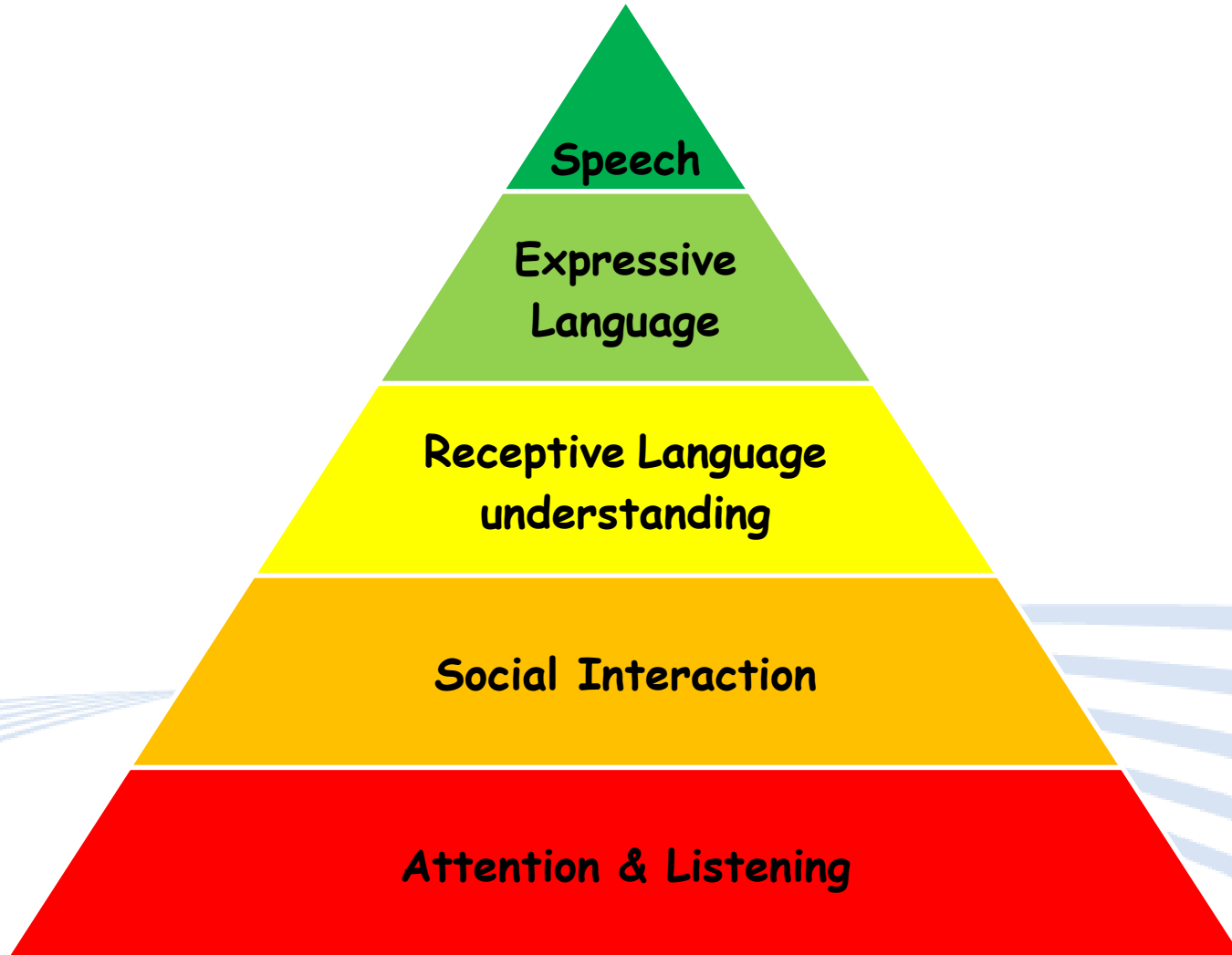
Clinical Team Leads, S<

elt-tr.SLTAdmin@nhs.net

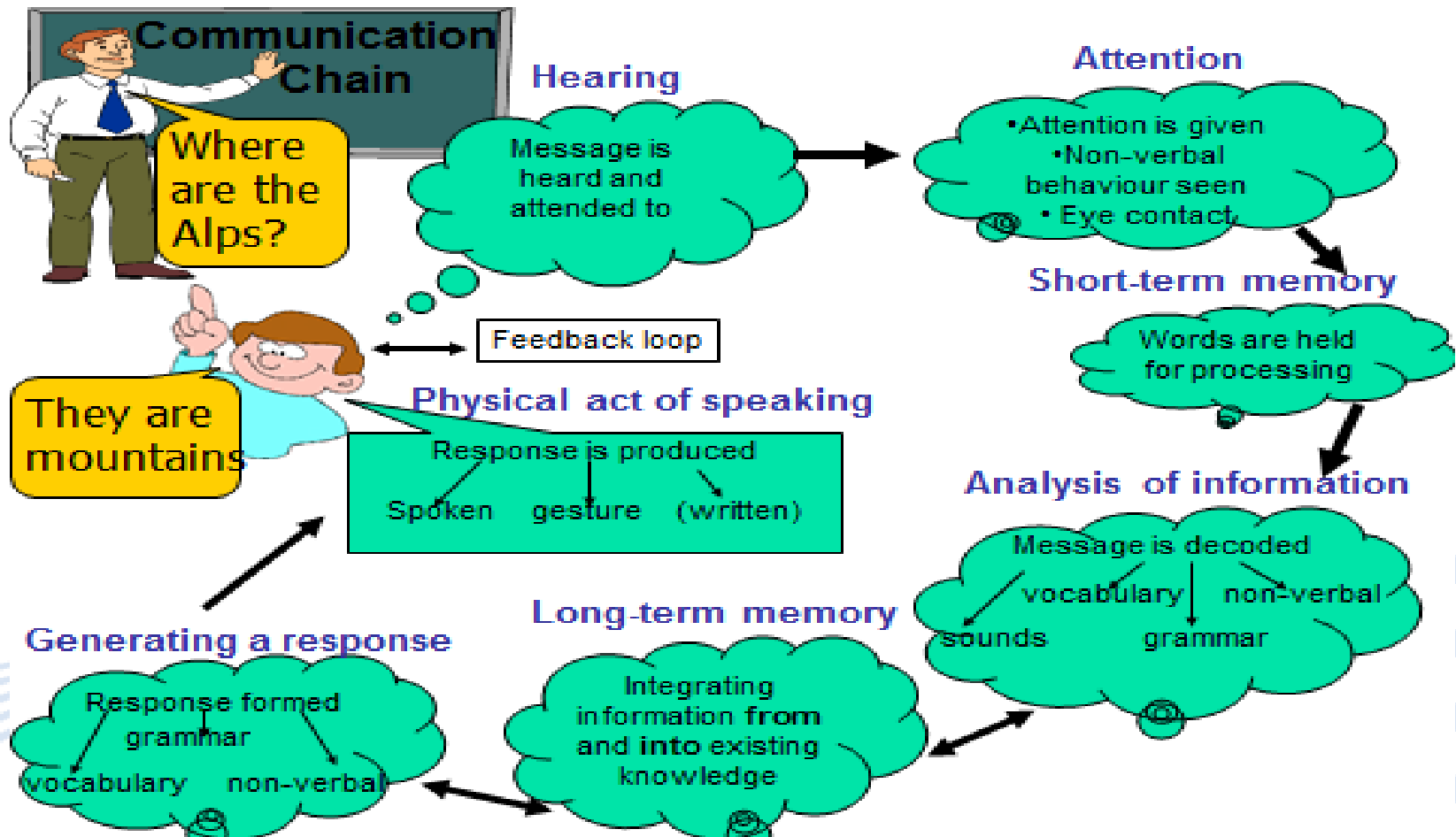
SEND Event

27 April 2017


Communication Pyramid



Communication Chain



Other factors affecting the communication chain

- Cognitive skills
 - Hearing / Vision
 - Medical conditions
 - Environment/experience
 - Motor skills
 - Emotions/behaviour
 - Self-esteem
 - EAL
- 
- A series of light blue, curved, wavy lines that sweep across the bottom right portion of the slide, starting from the left edge and extending towards the right.

Speech and Language Therapy
for children and young people in Barnet



Who?

Children and Young People 0 – 19 years



Where?

- Clinic
- Children's Centres
- School
- Nursery
- Home



What do we do?

- Communication through play
- Social Communication
- Understanding Language
- Expressive Language
- Speech Sounds
- Fluency / stammering
- Voice
- Hearing
- Dysphagia
- Work closely with parents and colleagues in Health and Education

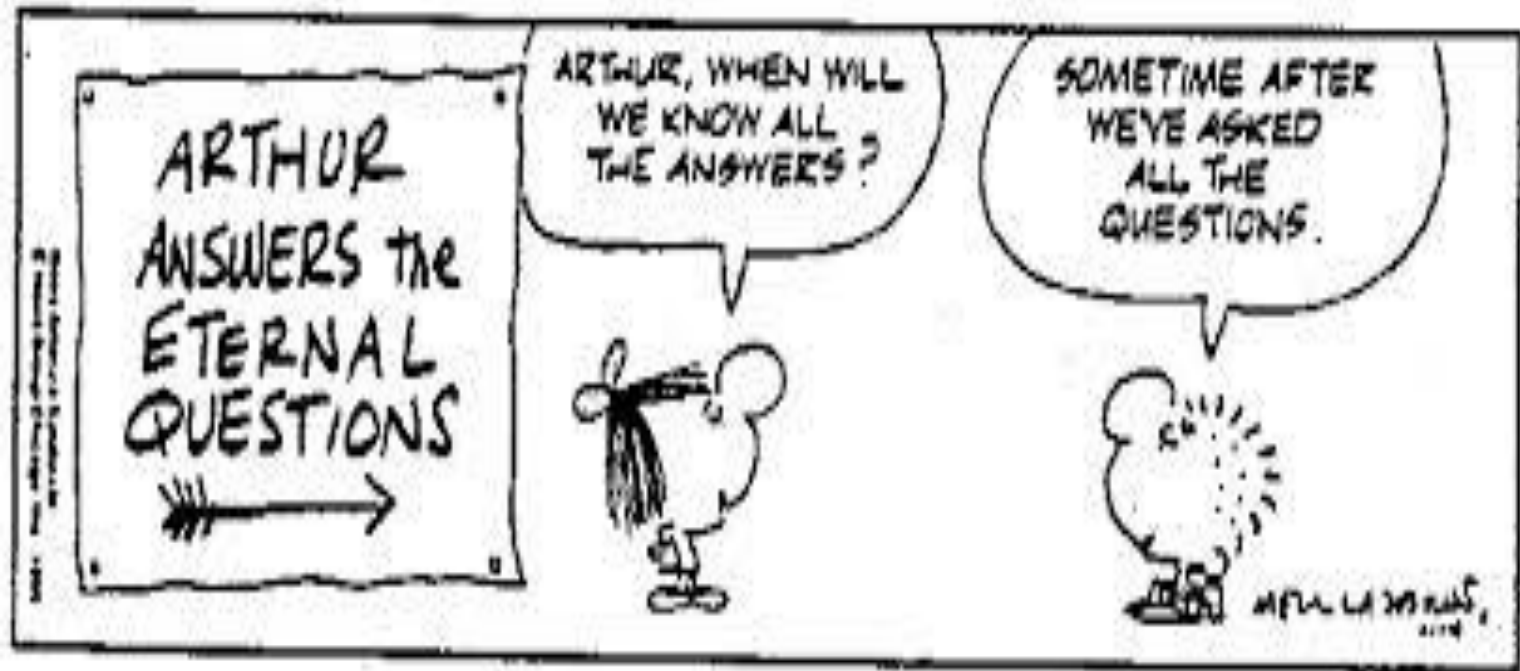


How do we do it?

- Direct work in any of the above settings
- Training for parents and workforce
(Health and Education)
- Consultation
- Support communication
environment



Questions

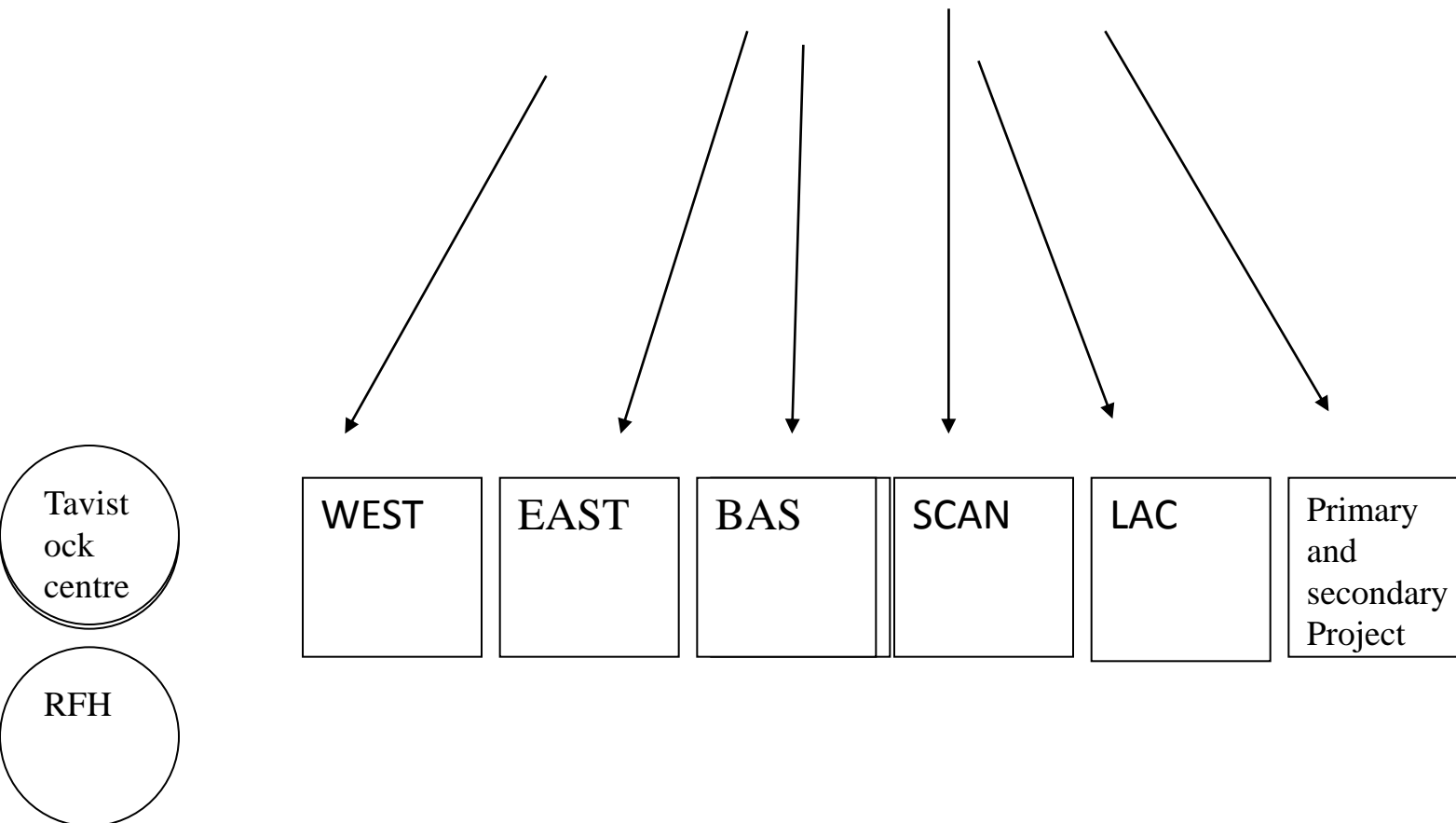


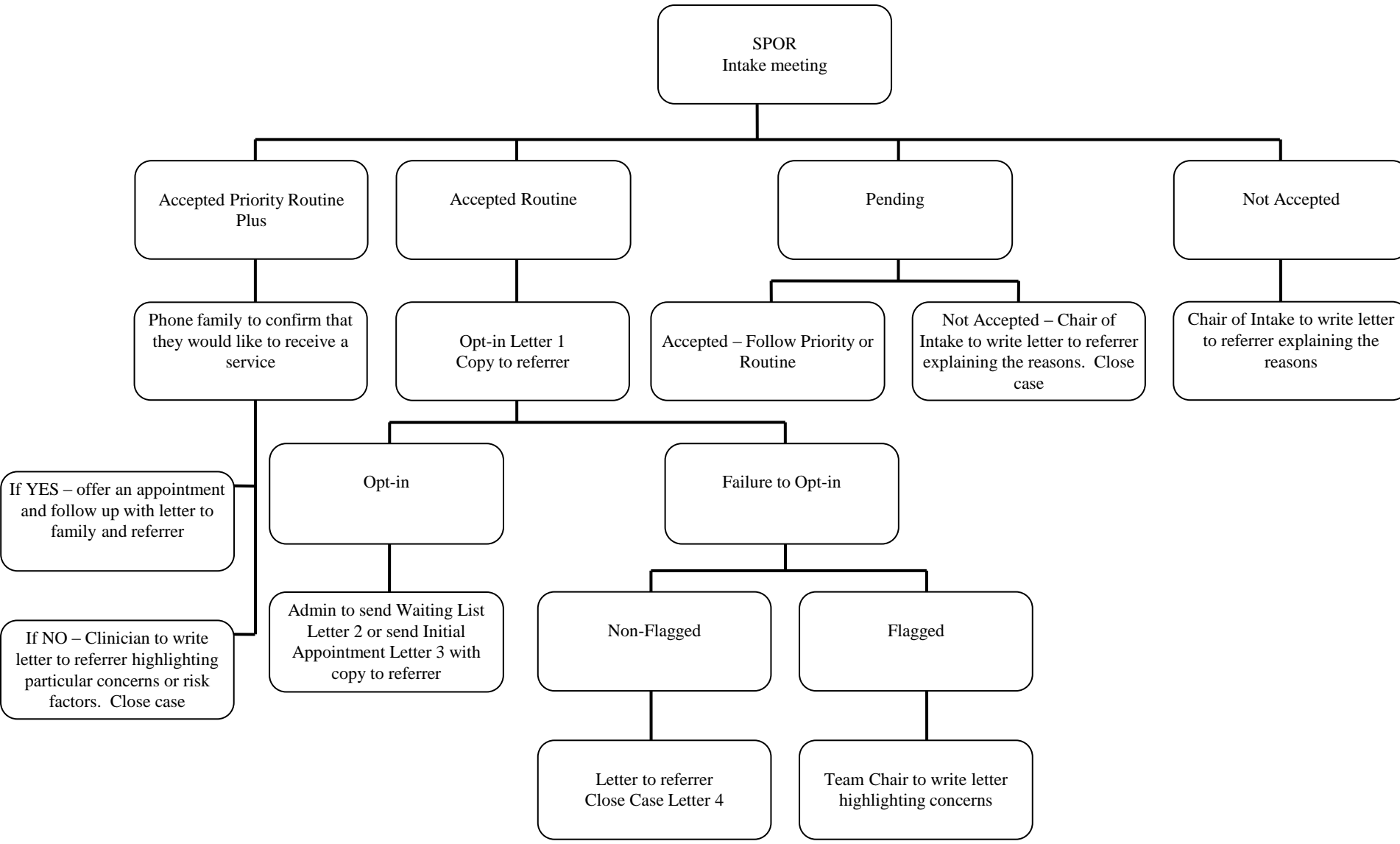
Presentation for SEND Local Offer Conference

Barnet CAMHS

Dr S Vergnaud

Single point of entry Referral Pathways to Barnet CAMHS





Neuro-developmental pathway

- Problems referred around ADD, learning and behaviour impacting on learning are directed after a generic assessment if information is insufficient to the ND clinic.
- Concerns from schools must be explicit or will be requested if GP refers.
- Monthly joint Paediatric/CMHS clinic to avoid waiting-times and duplication for children under 7.

ND team and assessment

- ND team is : psychiatrists, psychologists, paediatricians and SALT.
- Carries out autism assessment (ADI & ADOS) and ADHD assessment
- CAMHS does not have the capacity to do a psychometric evaluation, (very occasionally done)
- Extensive liaison with schools and Education/ Special needs department
- Role regarding recommendations for EHCP and support in school needs further clarification.

CAMHS interventions for ND

- Psycho-education,
- Psychopharmacology
- Psychological interventions when necessary
- Family therapeutic interventions
- Lack of parent support group
- Liaison with voluntary agencies but the changes are a problem to keep up with.
- CAMHS has limited capacity for long-term treatment/support.