

The Hitchhikers guide to the 0-25 Service

- **Don't Panic !!**

0-25 Service

Sendias Conference 29.09 September

Content

- 0-25 model
- Who we work with
- Current offer to children and young people
- Areas we are looking to improve
- Crossovers with health

0-25 Model

- Work with children and young people aged 0-25 to avoid the cliff edge at aged 18 transitioning into Adult Service
- Joined up work with Education to address the principles of EHCP and SEND legislation
- Provide consistency for families until transition at age 25
- Better forward planning with families to enable us to intervene earlier to avoid escalation into high cost unplanned provision

Who do we work with ? 3 Entry points

Children and young aged 0-25:

1. Shortbreaks: targeted service available for families with children with disabilities who receive mid-rate Disability Living Allowance within Barnet
2. Children with severe and profound learning disabilities (0-18), delivering social work assessments that identify unmet needs or risk
3. Vulnerable Young Adults (16-25)with behaviour that challenges , who need support for independent living or support to remain at home .

0-25 Offer: Shortbreaks

Shortbreaks: delivered from a framework of nine approved providers.

Typical offer 10 days funded activity per year, targeted service, offered to approximately 500 families

- Activities during school holiday
- Residential stays
- Enabling hours

0-25 Offer: Social Work assessments

Families with children who meet the threshold of severe and profound disability will be allocated a qualified Social Worker who will complete a children and families assessment

Assessment will:

- consider the impact of the disability on all family members
- make a recommendation about support needed and, if no safeguarding or other issues, a children with disability plan(CWD plan) is put in place and reviewed annually


A CWD plan can provide:

- Direct payments for parents to employ a carer to support them with personal care for the child
- Hours from a Homecare agency
- Respite for a family e.g. overnight stays or enabling a carer to be employed to look after the child to give the family a break
- A carer to support a child to attend activities

Assessment outcomes :

| | |
|-----------------------------------|-----|
| • Children with disabilities plan | 140 |
| • Child in need plan | 40 |
| • Child protection plan | 3 |
| • Accommodation | 5 |
| • Legal proceedings | 2 |

CWD plan

| | | | | |
|--|---|---|----------------------|------------|
| London Borough of Barnet TRANSITIONS NLBP, OAKLEIGH ROAD SOUTH , LONDON N11 1NP Tel: Fax: | |  | | |
| CWD Form | | | | |
| CWD Form | | | | |
| Reason for Contact with the Service | <p>***** has been diagnosed with the following:-</p> <ol style="list-style-type: none"> 1. Bilateral spastic/Dystonic cerebral palsy (GMFCS level 4) 2. Born prematurely at 26 weeks gestation. 3. MRI brain scan - Periventricular leucomalacia 4. Regression of Speech and Language in 2013 - normal neurological investigations, now being assessed for regressive autism. 5. Disrupted sleep pattern with periods of excessive irritability and crying. 6. Intermittent constipation. 7. Previously diagnosed with cows milk protein intolerance. 8. Recent escalation of irritable episodes both in frequency and duration. 9. Long sightedness 10. Sensory processing issues and variable visual interest. 11. Subluxation right hip and mild to moderate subluxation left hip - improved on most recent hip x-ray (RNOH). 12. Previous botulinum toxin injections to bilateral hip abductors (January 2012) <p>The family are receiving support based on the Child and Families Assessment completed on 16th November 2015 by Martin Payne.</p> <p>The current care package is due for review (self return assessment) on 16th November 2016.</p> | | | |
| Current Disabilities | | | | |
| | Notification Date | Ended On | Nature of Disability | Severity |
| | 07-Feb-2014 | | Learning | |
| | 18-Jun-2009 | | Hand function | 3 - Severe |
| | 18-Jun-2009 | | Mobility | 3 - Severe |
| | 18-Jun-2009 | | Incontinence | 3 - Severe |
| Disabled | | | | |
| Is Disabled? | Yes | | | |
| Is on a Disability Register? | Yes | | | |
| Needs Plan | | | | |
| Need | Provision | Review Date | | |
| Help with getting ready for school | 7.5 hours per week of Direct Payment (Monday to Friday) | 16th November 2016 | | |
| Help with getting ready for bed | 7.5 hours per week of Direct Payment (Monday to Friday) | 16th November 2016 | | |
| Support to go horse riding or another activity | 2 hours on Saturday morning | 16th November 2016 | | |
| Help with getting ready for bed | 1.5 hours on Saturday evening | 16th November 2016 | | |
| Help with the personal care | 1 hour each on Sunday morning and evening | 16th November 2016 | | |
| Other Details: | Short Breaks offer for 2016/17 is 15 days services | | | |

0-25 Offer: Young people with emotional or behavioural issues

Young people within care settings or at home with social work support who have been identified as vulnerable with behaviour that challenges, that will make it difficult for them to live independently

- referred to the 0-25 service at age 16 to enable joint work to plan future provision
- At 18 they will transfer to a 0-25 worker

Between 16-18 transition worker alongside the allocated children worker will:

- Review the existing placement and if appropriate attain funding from Adult Services to continue placement
- Put in place supported living arrangements if at aged 18 they want/need to move on
- Put in place a support package for parents as carers if the young person remains at home

Areas we are developing

- Developing clearer pathways at the beginning of a child's life to (Semi) independence
- Using systemic approach to develop the resilience of the Child/young person and wider network
- Develop transition Social Worker role to improve journey
- Looking at the services available at Barnet to enable strategic planning of future commissioning to ensure value for money
- Work closer with Education such as Multi-agency panel and transitioning tracking group
- Development of local offer: user feedback groups and regular consultation to continually improve the service and outcomes of children/young person
- Improving communication methods e.g. how we use the voice of our child

10 ways of working

- 1. Expansion of the Early Years Multi-agency model and early support programme across the child's journey. i.e The provision of a family information pack detailing all services, support and resources available, the use of parents whose children have recently transitioned to act as peer support, and Team around the child meetings at key stages of transitioning into new education settings
- 2. Implement Peer Support and the buddy system. In particular to support children & young people remaining in / returning to the community after periods of residential care and to avoid residential care in the first place.
- 3. Outcome based practice, assessment and commissioning. An approach to working with CYP & their families with a view towards the outcomes they want to achieve for their children
- 4. Structural integration of social care from 0-25. Creating a joined up journey from child into adulthood that focusses as early as possible on creating a life-long vision with CYP & families and that creates plan-ability of available adult service provision well in advance of the CYP 18th Birthday.
- 5. Co-location. The newly created 0-25 social care integrated service to be co-located with colleagues in education, allowing for additional awareness of services and ways of working between the service areas, improving understanding of colleagues work and providing improved opportunity to information sharing.
- 6. Roadmap to pooled funding.
- 7. Systemic approach & expectation management focus.
- 8. Consistency of relationship & 0-25 practitioner. The service will work on the principle to keep changes to allocated workers to an absolute minimum
- 9. Voice of the child & family. Working with children & families throughout to help shape the service & review its' effectiveness will be at the heart of the new ways of working.
- 10. Differentiated response by type of need

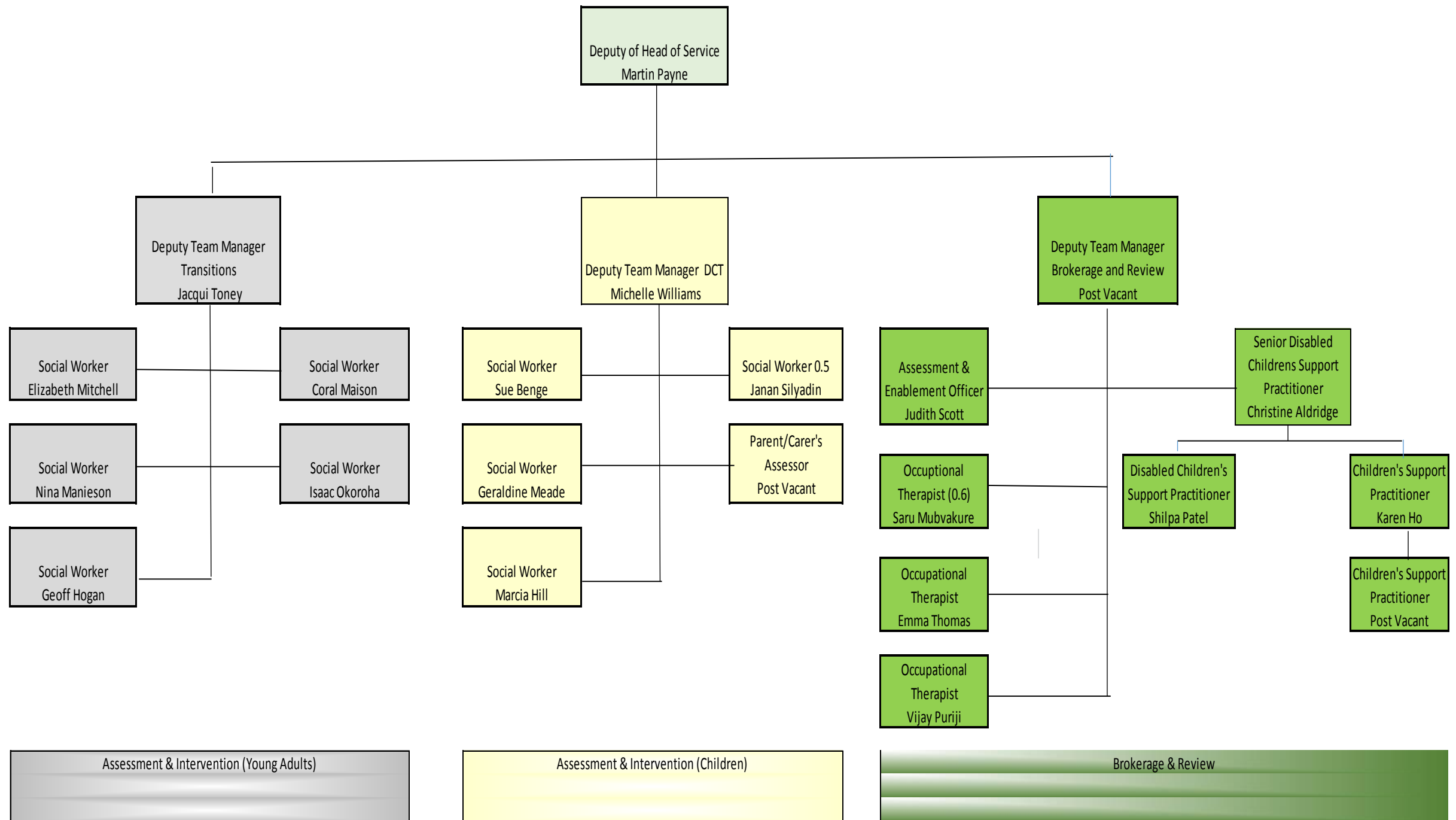
Crossovers with health

- Process for considering joint funding for complex cases-using continuing care application framework. If appropriate health invited to panel
- Commissioning of CAMHS under review
- Pediatric occupational therapists placed within the service who work alongside health colleagues

Opportunities

- Development of autism strategy e.g. adolescence resource centre
- Targeted service for those on the autistic spectrum as highly expensive in teenage years
- Lack of respite for those with behavioral problems as opposed to physical
- Most complex children have no access to local resource and have to go out of Borough

Current structure



Resources.. People

- People
- 4 managers
- 8.5 social workers (3.5 children, 5 young adults)
- 1.6 Occupational therapists
- 1 reviewing officer
- 2 Support practitioners

Resources.. Budgets

- **£747k Direct Payments**
- **£536 Short breaks**
- **£270k Respite**

How it works, flowchart

