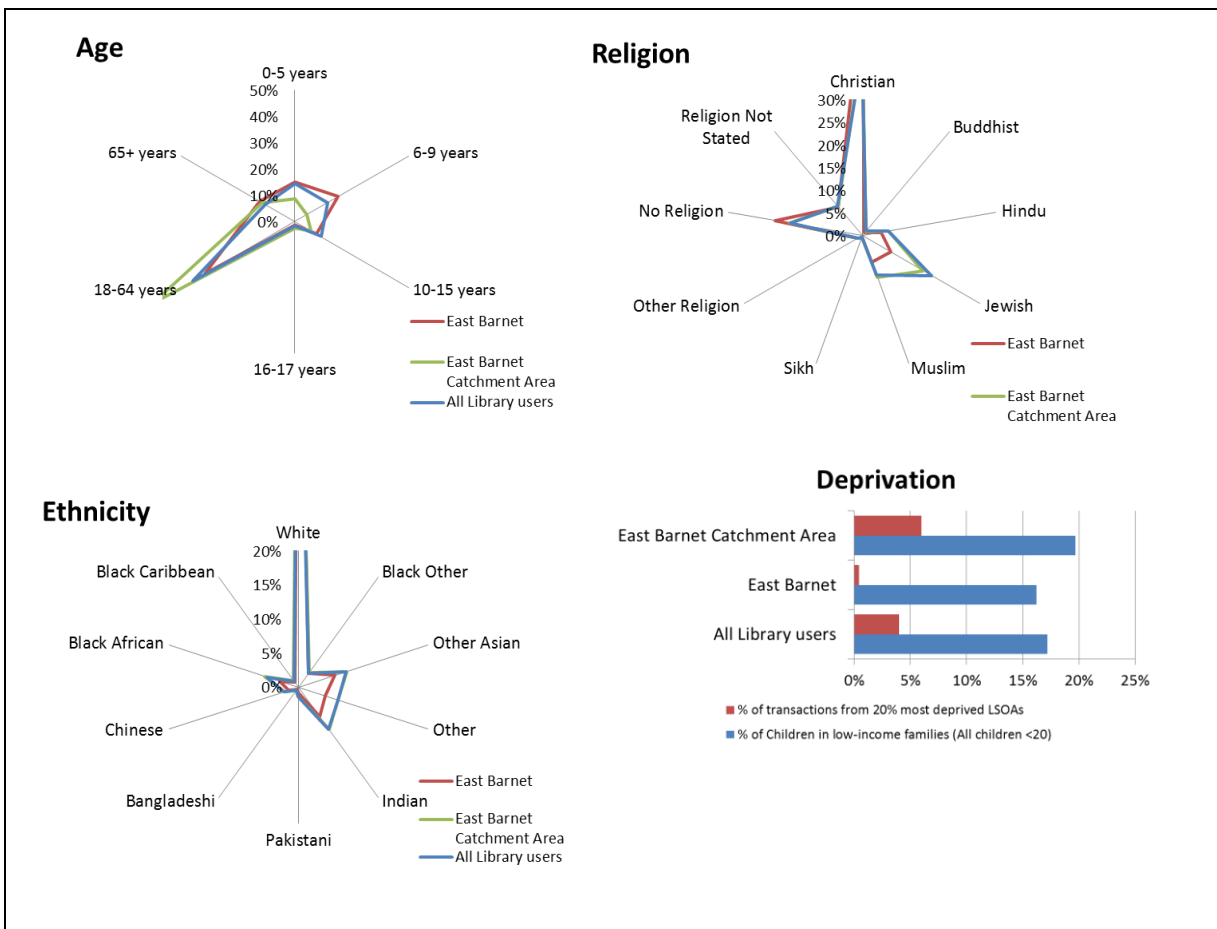


Schedule 4: Information on each Partnership library

East Barnet Library, 85, Brookhill Road, London EN4 8SG

The current East Barnet Library building is approximately 5,800 square feet and it is proposed that approximately 1,991 square feet will be leased to the Partnership library. The remainder will be retained by the council to rent out commercially or for use to raise income for the council. However, the council would be interested to explore any proposals from potential Partnership library community bodies that would generate a similar income for the remaining area of the building. Proposals to develop new library provision co-located with new leisure facilities in this part of the borough are in their early stages and if successful, it is expected that the Partnership library will transfer to this new location

	Current East Barnet Library service	Borough comparison
Visitors per open hour (2014/15)	49	Average of 49
Number of transactions (2013/14)	167,039	Range of 49,000 to 349,000
Number of borrowers (2014/15)	9,287	Range of 4,000 to 26,000
Number of loans (2014/15)	69,664	Range of 24,000 to 161,000

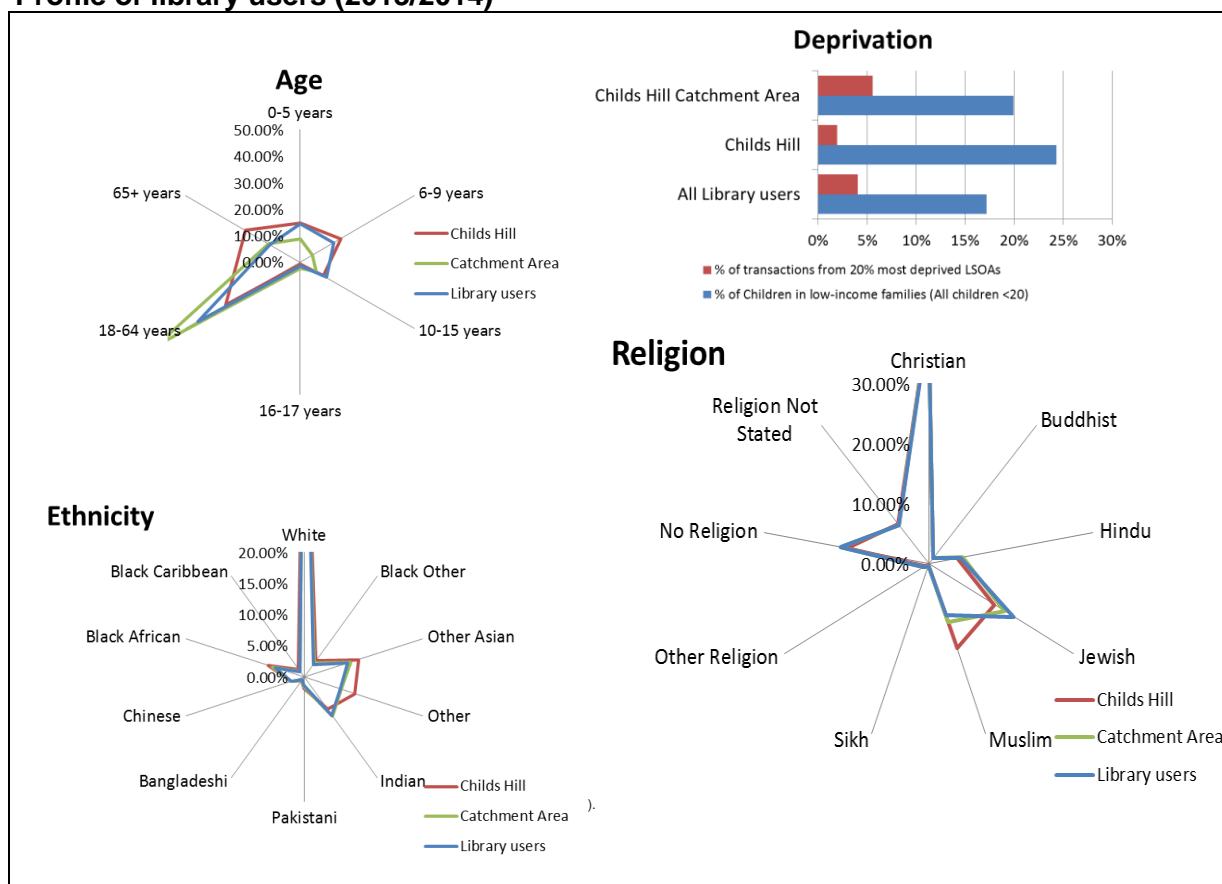


Child's Hill Library, 320 Cricklewood Lane, London NW2 2QE

The current Childs Hill Library building is approximately 3,767 square feet and it is proposed that approximately 1,991 square feet will be leased to the Partnership library. The remainder will be retained by the council to rent out commercially or for use to raise income for the council. However, the council would be interested to explore any proposals from potential Partnership library community bodies that would generate a similar income for the remaining area of the building.

	Current Child's Hill Library service	Borough comparison
Visitors per open hour (2014/15)	18	Average of 49
Number of transactions (2013/14)	98,952	Range of 49,000 to 349,000
Number of borrowers (2014/15)	4,066	Range of 4,000 to 26,000
Number of loans (2014/15)	27,204	Range of 24,000 to 161,000

Profile of library users (2013/2014)

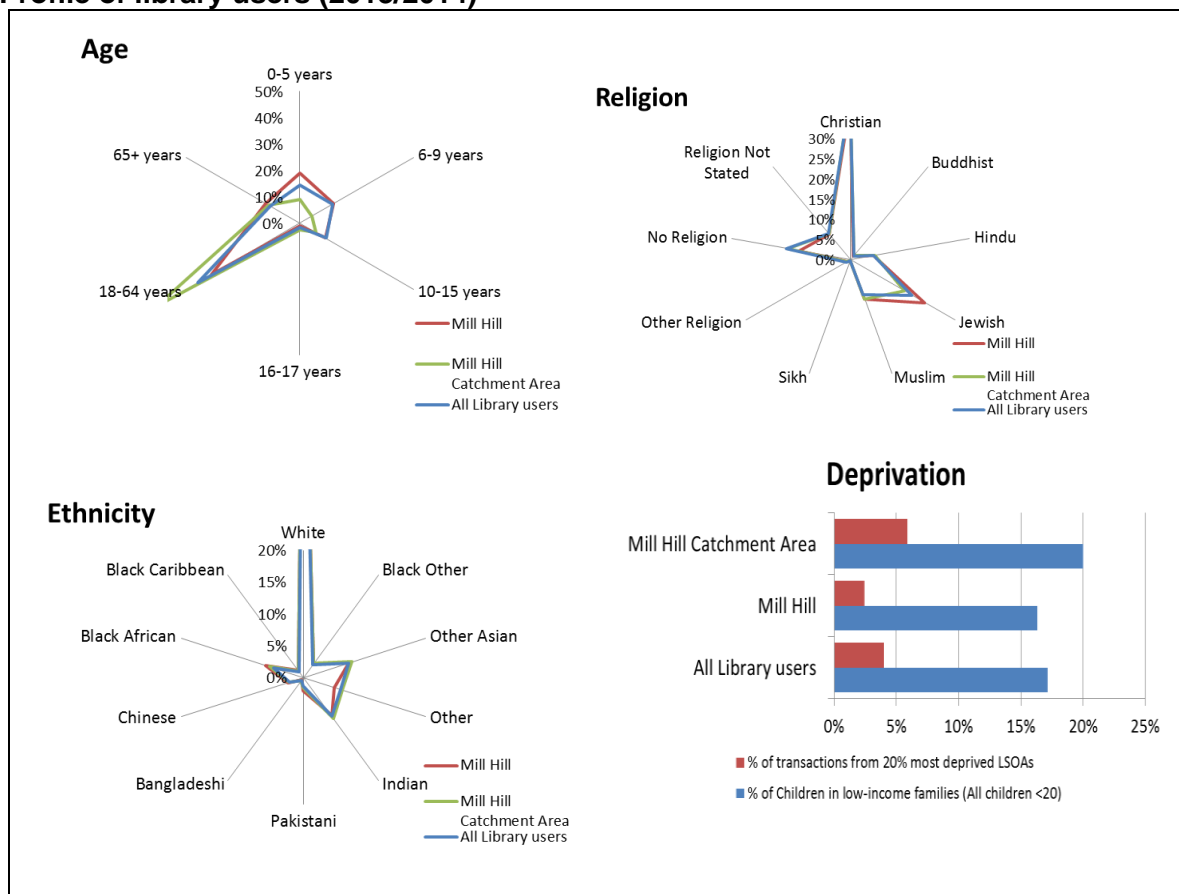


Mill Hill Library, 11 Hartley Avenue, London NW11 2HX

The current Mill Hill Library building is approximately 5,597 square feet and it is proposed that approximately 1,991 square feet will be leased to the Partnership library. The remainder will be retained by the council. There is an opportunity for the Partnership library to become an integral part of a new community facility at Dawes Lane. If the new community facility is successfully established, it is expected that the Partnership library will transfer to this new location.

	Current Mill Hill Library service	Borough comparison
Visitors per open hour (2014/15)	29	Average of 49
Number of transactions (2013/14)	133,103	Range of 49,000 to 349,000
Number of borrowers (2014/15)	8,670	Range of 4,000 to 26,000
Number of loans (2014/15)	54,095	Range of 24,000 to 161,000

Profile of library users (2013/2014)



South Friern Library, Colney Hatch Lane, London N10 1HD

The current South Friern building is a new purpose built facility, co-located with a residential development. It is leased by the council on a long lease. The current library space is approximately 4,445 square feet and it is proposed that approximately 1,991 square feet will be leased to the Partnership library.

	Current South Friern Library Service	Borough comparison
Visitors per open hour (2014/15)	36	Average of 49
Number of transactions (2013/14)	68,173	Range of 49,000 to 349,000
Number of borrowers (2014/15)	7,457	Range of 4,000 to 26,000
Number of loans (2014/15)	27,784	Range of 24,000 to 161,000

Profile of library users (2013/2014)

