



## H1 Assessment Maps

Figure 1 – All Open Spaces

Figure 2 - Public Parks

Figure 3 - Hectares of Park per 1000 people

Figure 4 – 400m local park catchment

Figure 5 – 1200m District park catchment

Figure 6 -local and district park catchment

Figure 7 – Green Belt Area

Figure 8 –Walking and Cycling Accessibility to Parks

Figure 9 –Rail and Bus Accessibility to Parks

Figure 9a – Accessibility to Parks - High and Low Scoring

Figure 10 – Play Provision

Figure 11 – Play Provision per 1,000 Children

Figure 12 – Play Provision Catchment Area

Figure 13 –Walking and Cycling Accessibility to Play Facilities

Figure 14 – Accessibility by Bus and Rail to Play Facilities

Figure 14a - Accessibility to Play Facilities - High and Low Scoring

Figure 15 – All sites with playing pitches

Figure 16 – Provision of playing pitches per 1,000 people

Figure 17 – Area within 1.2km of a Playing Pitch

Figure 18 – Tennis, Bowls and Basketball / Netball Provision in Open Spaces

Figure 19 - Walking and Cycling Accessibility to Playing Pitches

Figure 20 – Accessibility by bus and rail to playing pitches

Figure 20a - Accessibility to Playing Pitches - High and Low Scoring

Figure 21 – Sites of Nature conservation importance

Figure 22 – Natural Greenspace provision per ward area

Figure 23 – Area within 1km of a Metropolitan or Borough Grade Site

Figure 24 – Area within 500m of a Nature Conservation Site

Figure 25 - Walking and Cycling Accessibility to Nature Conservation Sites

Figure 26 – Accessibility by Bus and Rail to Nature Conservation Sites

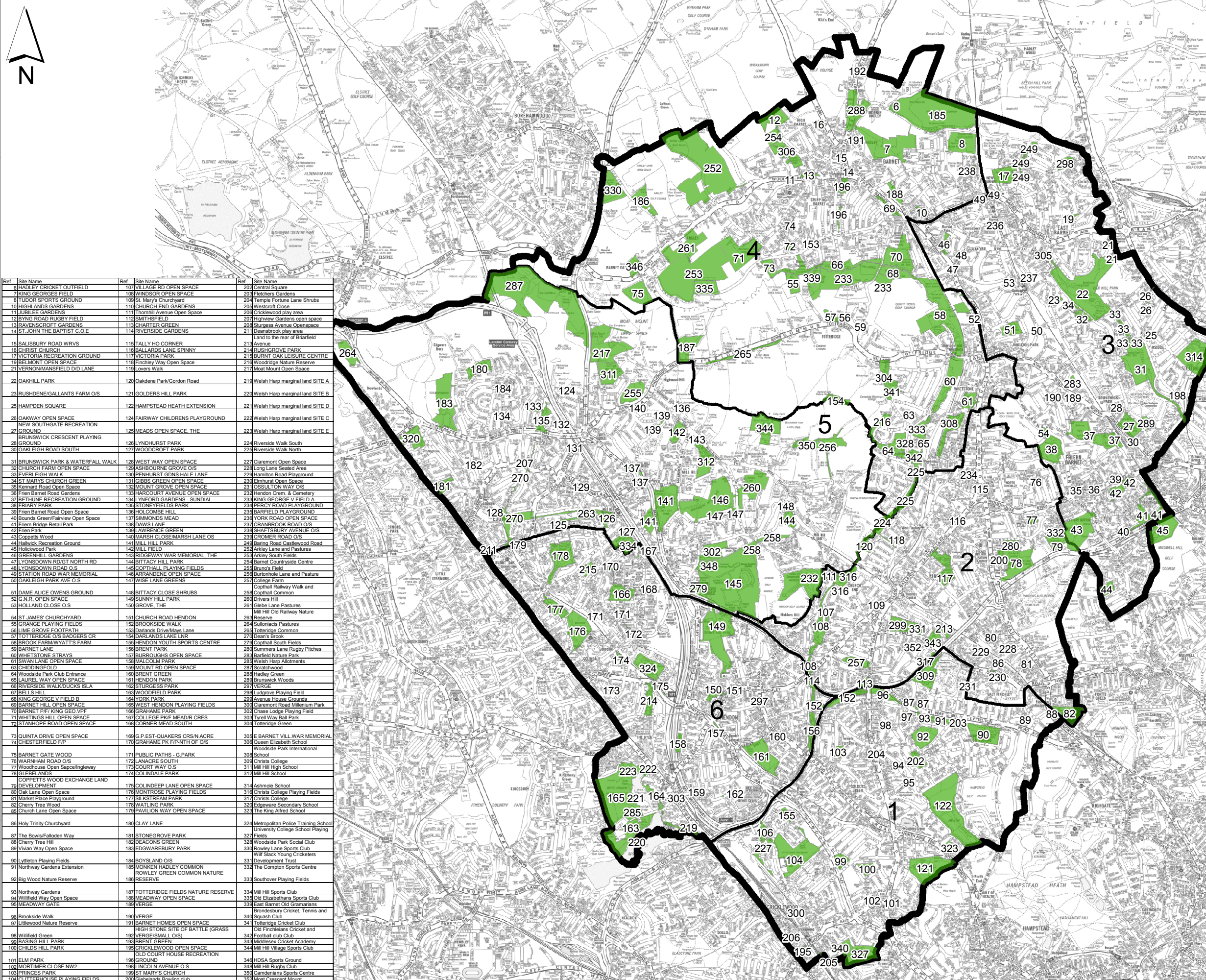
Figure 26a - Accessibility to Natural Green Spaces - High and Low Scoring

Figure 27 – High and Low Value Parks

Figure 28 – High and Low Value Sports Sites

Figure 29 – High and Low Value Natural and Semi Natural Green Spaces

Figure 30 – Sites Recommended for Improvement



Sites Surveyed  
 Ward Groups  
 Borough Boundary

Ref	Site Name	Ref	Site Name	Ref	Site Name
6	HADLEY CRICKET OUTFIELD	107	VILLAGE RD OPEN SPACE	202	Central Square
7	KING GEORGES FIELD	108	WINDSOR OPEN SPACE	203	Fletchers Gardens
8	TUDOR SPORTS GROUND	109	St. Mary's Churchyard	204	Temple Fortune Lane Shrubs
9	HIGHLANDS GARDENS	110	CHURCH END GARDENS	205	Westcott Close
10	JUBILEE GARDENS	111	Thornhill Avenue Open Space	206	Cricklewood play area
11	BYNG ROAD RUGBY FIELD	112	SMITHSFIELD	207	Highview Gardens open space
12	RAVENSCROFT GARDENS	113	CHARTER GREEN	208	Sturges Avenue Open Space
13	ST JOHN THE BAPTIST C.O.E	114	REVERSIDE GARDENS	211	Deansbrook play area
15	SALISBURY ROAD WRVS	116	TALLY HO CORNER	213	Land to the rear of Briarfield Avenue
16	CHRIST CHURCH	118	BALLARDS LANE SPINNY	214	RUSHGROVE PARK
17	VICTORIA RECREATION GROUND	119	Finchley Way Open Space	215	BURNT OAK LEISURE CENTRE
19	BELMONT OPEN SPACE	118	Finchley Way Open Space	216	Woodridge Nature Reserve
21	VERNONMANSFIELD D/D LANE	119	Lovers Walk	217	Moat Mount Open Space
22	OAKHILL PARK	120	Oakdene Park/Gordon Road	219	Welsh Harp marginal land SITE A
23	RUSHDENE/GALLANTS FARM O/S	121	GOLDERS HILL PARK	220	Welsh Harp marginal land SITE B
25	HAMPDEN SQUARE	122	HAMPSTEAD HEATH EXTENSION	221	Welsh Harp marginal land SITE D
26	OAKWAY OPEN SPACE	124	FAIRWAY CHILDRENS PLAYGROUND	222	Welsh Harp marginal land SITE C
27	NEW SOUTHGATE RECREATION GROUND	126	LYNDHURST PARK	224	Riverside Walk South
28	BRUNSWICK CRESCENT PLAYING GROUND	126	WOODCROFT PARK	223	Riverside Walk North
30	OAKLEIGH ROAD SOUTH	127	WEST WAY OPEN SPACE	227	Claremont Open Space
31	BRUNSWICK PARK & WATERFALL WALK	128	ASHBOURNE GROVE O/S	228	Long Lane Seated Area
32	CHURCH FARM OPEN SPACE	129	PENHURST GONS HALE LANE	229	Hamilton Road Playground
33	EVERLEIGH WALK	130	BIRRS GREEN OPEN SPACE	230	Clarendon Open Space
34	ST MARYS CHURCH GREEN	131	MOUNT GROVE OPEN SPACE	231	OSSULLIN WAY O/S
35	Kenard Road Open Space	132	HARCOURT AVENUE OPEN SPACE	232	Hendon Crem. & Cemetery
36	Frien Barnet Road Gardens	133	LYNFORG GARDENS - SUNDIAL	233	KING GEORGE V FIELD O/S
37	BETHUNE RECREATION GROUND	134	TONY FIELDS PARK	234	FERRY ROAD PLAYGROUND
38	FRINARY PARK	135	HOLCOMBE HILL	235	BARFIELD PLAYGROUND
39	Frien Barnet Road Open Space	136	SIMMONDS MEAD	236	YORK ROAD OPEN SPACE
40	Bounds Green/Fairview Open Space	137	JAWES LANE	237	CRANBROOK ROAD O/S
41	Frien Bridge Retail Park	138	LAWRENCE GREEN	238	SHAFTSBERY AVENUE O/S
42	Green Park	140	MARSH CLOSE/MARSH LANE O/S	239	CROMER ROAD O/S
43	Coppetts Wood	141	MILL HILL PARK	240	Barnet Road Castlewood Road
44	Hallwick Recreation Ground	142	RIDGEWAY WAR MEMORIAL THE	253	Arlsey South Fields
45	Hollowood Park	143	BITTACY HILL PARK	254	Barnet Courtyards Centre
46	GREENHILL GARDENS	144	COPTHALL PLAYING FIELDS	255	Bruno's Fields
47	LYONSDOWN RD/GT NORTH RD	145	ARRANGENE OPEN SPACE	258	Burnthorpe Lane and Pasture
48	LYONSDOWN ROAD O/S	146	WISE LANE GREENS	257	College Farm
49	STATION ROAD WAR MEMORIAL	147	BITTACY CLOSE SHRUBS	258	Copthall Railway Walk and Copthall Common
50	OAKLEIGH PARK AVE O/S	148	N.L. OPEN SPACE	259	DRIVERS HILL
51	DAME ALICE OWENS GROUND	149	HOLLAND CLOSE O/S	261	Glebe Lane Pastures
52	N.L. OPEN SPACE	150	GROVE, THE	262	Mill Hill Old Railway Nature Reserve
53	HOLLAND CLOSE O/S	151	CHURCH ROAD HENDON	263	Reserve
54	ST JAMES' CHURCHYARD	152	BROKSIDE WALK	264	Southwicks Pastures
55	GRANGE PLAYING FIELDS	153	Darlands Drive/Maya Lane	265	Totteridge Common
56	LIME GROVE FOOTPATH	154	DARLANDS LAKE LNR	270	Dean's Brook
57	TOTTERIDGE O/S BADGERS CR	155	HENDON YOUTH SPORTS CENTRE	273	Copthall South Fields
58	BROOK FARM/YATTS FARM	156	BRENT PARK	283	Summers Lane Rugby Pitches
59	BARNET LANE	157	BURROUGHS OPEN SPACE	283	Barfield Nature Park
60	WHETSTONE STRAYS	158	MALCOLM PARK	285	Welsh Harp Allotments
61	SWAN LANE OPEN SPACE	159	MOUNT RD OPEN SPACE	287	Scratchwood
63	CHIDDINGFOLD	160	BRENT GREEN	288	Hasley Green
64	Woodside Park Club Entrance	161	HENDON PARK	289	Brunswick Woods
65	LAUREL WAY OPEN SPACE	162	TURGESS PARK	297	VERGE
66	RIVERSIDE WALK/DUCKS ISLA	163	WOODFIELD PARK	298	Ludgrove Playing Field
67	BELLS HILL	164	CORK PARK	299	Avenue House Sports Club
68	KING GEORGE V FIELD B	165	WEST HENDON PLAYING FIELDS	300	Clarendon Road Millennium Park
69	BARNET HILL OPEN SPACE	166	GRAHAM PARK	302	Chase Lodge Playing Field
70	BARNET P/F KING GEO V/PF	167	COLLEGE PKF MEAD/R CRES	303	Tyrell Way Ball Park
71	WHITINGS HILL OPEN SPACE	168	CORNER MEAD SOUTH	304	Tottenham Green
72	STARHOPPE ROAD OPEN SPACE	169	G.P. EST-QUAKERS CR/S/ACRE	305	E BARNET VILL WAR MEMORIAL
73	QUINTA DRIVE OPEN SPACE	170	GRAHAM PK F/P-NTH OF O/S	308	Queen Elizabeth School
74	CHESTERFIELD F/P	171	PUBLIC PATHS - G. PARK	308	Woodside Park International School
75	BARNET GATE WOOD	172	LANACRE SOUTH	309	Christs College
76	WARNHAM ROAD O/S	173	COURT WAY O/S	311	Mill Hill High School
77	Woodhouse Open Space/Ingleway	174	COLINDALE PARK	312	Mill Hill School
78	GLEBELANDS	175	COPPETTS WOOD EXCHANGE LAND DEVELOPMENT	314	Ashmole School
79	DEVELOPMENT	176	COLINDALE LANE OPEN SPACE	318	Christs College Playing Fields
80	Oak Lane Open Space	177	MONTROSE PLAYING FIELDS	317	Christs College
81	Market Place Playground	178	SILKSTEAD PARK	320	Edgeware Secondary School
82	Cherry Tree Wood	179	WATLING PARK	323	The King Alfred School
83	Church Lane Open Space	180	CLAY LANE	324	Metropolitan Police Training School
86	Holy Trinity Churchyard	181	STONEGROVE PARK	328	Woodside Park Social Club
87	The Bows/Faloden Way	182	DEACONS GREEN	329	Bowley Lane Sports Club
88	Cherry Tree Hill	183	EDGWAREBURY PARK	331	Wif Slack Young Cricketers
89	Wivan Way Open Space	184	BOYSLAND O/S	331	Development Trust
90	Littleton Playing Fields	185	MONKEN HADLEY COMMON	332	The Compton Sports Centre
91	Northway Gardens Extension	186	ROWLEY GREEN COMMON NATURE RESERVE	333	Southover Playing Fields
92	Big Wood Nature Reserve	187	TOTTERIDGE FIELDS NATURE RESERVE	334	Mill Hill Sports Club
93	Northway Gardens	188	MEADWAY OPEN SPACE	335	Old Elizabethans Sports Club
94	Wiffard Way Open Space	189	VERGE	339	East Barnet Old Gramarians
95	MEADWAY GATE	190	VERGE	343	Bronesbury Cricket, Tennis and Squash Club
96	Brookside Walk	191	BARNET HOMES OPEN SPACE	341	Tottenham Cricket Club
97	Littlewood Nature Reserve	192	HIGH STONE SITE OF BATTLE (GRASS)	342	Old Finchleians Cricket and Football club Club
98	Wiffard Green	193	VERGE-SMALL O/S	343	Middlesex Cricket Academy
99	BRADING HILL PARK	194	BRENT GREEN	344	Mill Hill Village Sports Club
100	CHILDERS HILL PARK	195	BRICKLAWOOD OPEN SPACE	346	HDSA Sports Ground
101	ELM PARK	196	GROUND	348	Camdenians Sports Centre
102	MORTIMER CLOSE NW2	197	UNION AVENUE O/S	352	Moat Crescent Mount
103	PRINCES PARK	198	ST. MARYS CHURCH		
104	CLITTERHOUSE PLAYING FIELDS	200	Clelandians Bowling club		
106	CLAREFIELD PARK				

-	24-08-2009	XX	XX	XX
Issue	Date	By	Chkd	Appd

**ARUP**  
 13 Fitzroy Street  
 London W1T 4BQ  
 Tel +44 (0)20 7636 1531 Fax +44 (0)20 7580 3924  
 www.arup.com

Client  
**London Borough of Barnet**

Job Title  
**Open Space Audit**

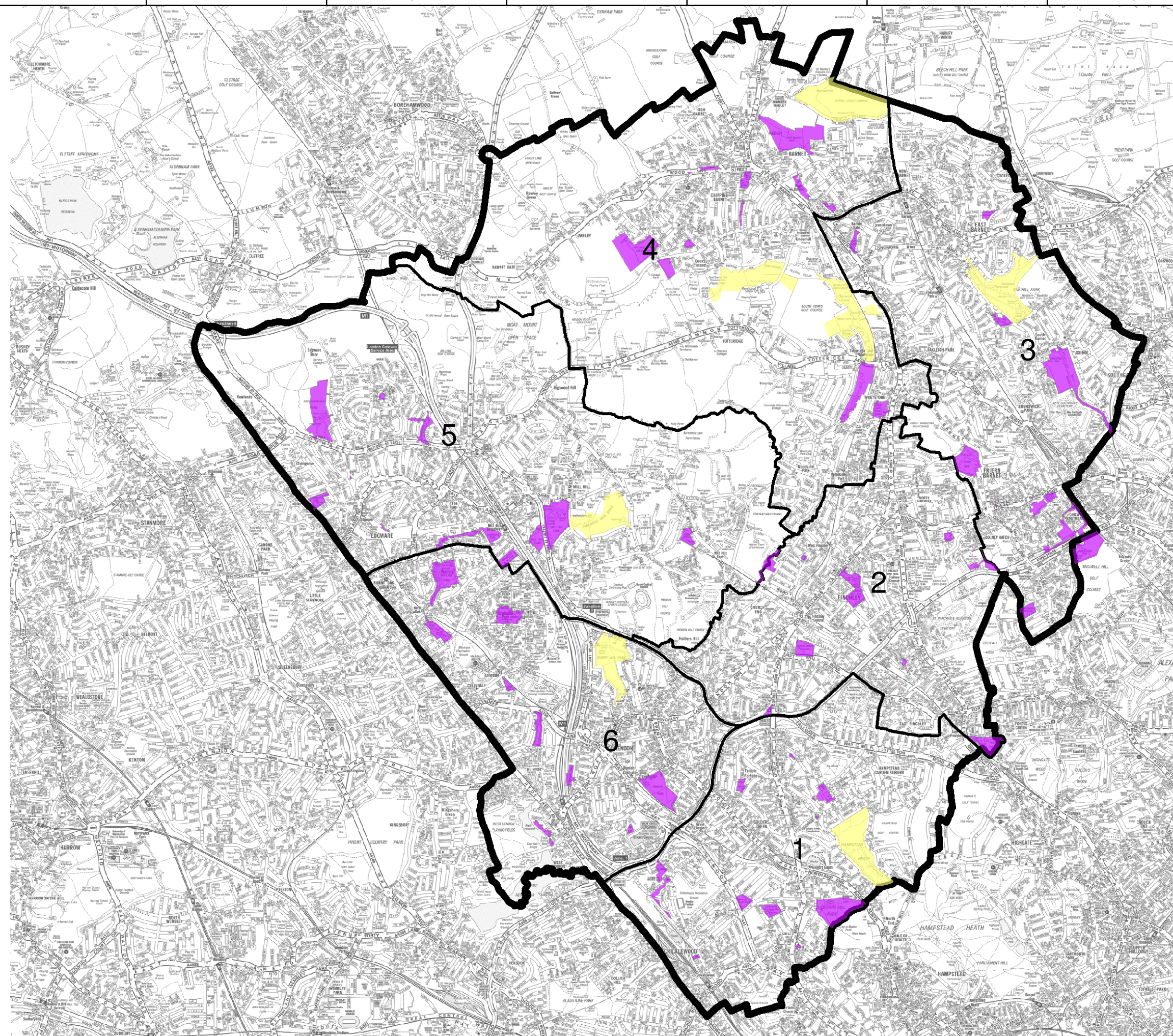
Drawing Title  
**Figure 1  
All Sites Surveyed**

Scale at A3  
**1:50,827**

Discipline  
**Civil - Planning**

Drawing Status  
**Issued**

Job No 208654	Drawing No 208654-000	Issue 00
------------------	--------------------------	-------------



- District Park/Garden
- Local Park/Garden
- Ward Groups
- Borough Boundary

-	24-08-2009	XX	XX	XX
Issue	Date	By	Chkd	Appd

# ARUP

13 Fitzroy Street  
 London W1T 4BQ  
 Tel +44 (0)20 7636 1531 Fax +44 (0)20 7580 3924  
 www.arup.com

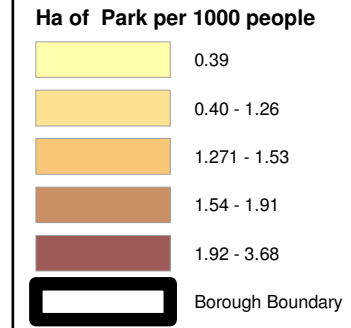
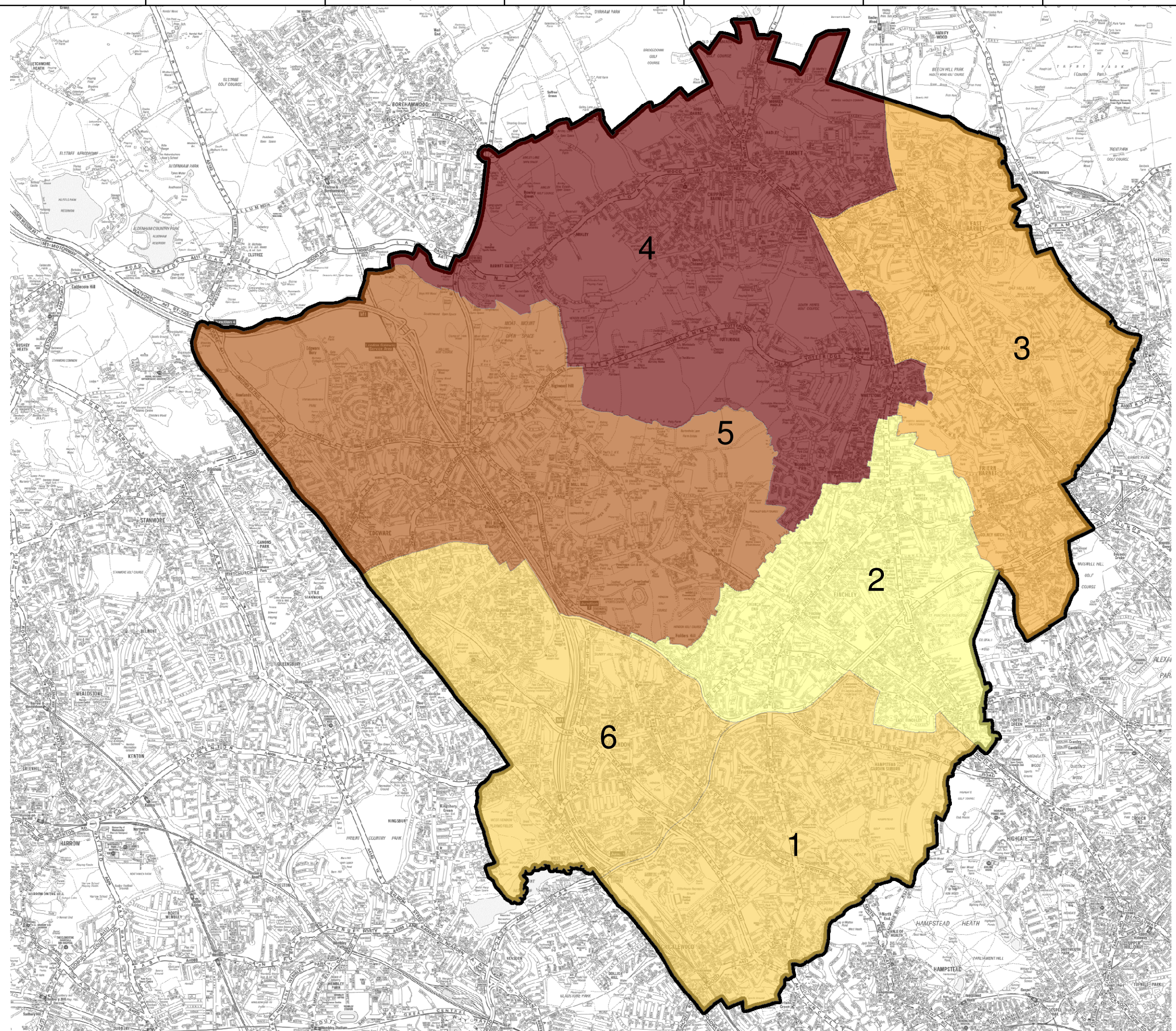
Client  
 London Borough of Barnet

Job Title  
 Open Space Audit

Drawing Title  
 Figure 2  
 Public Parks

Scale at A3  
 1:49,524  
 Discipline  
 Civil - Planning

Drawing Status Issued		
Job No 208654	Drawing No 208654-000	Issue 00



-	24-08-2009	XX	XX	XX
Issue	Date	By	Chkd	Appd

**ARUP**

13 Fitzroy Street  
 London W1T 4BQ  
 Tel +44 (0)20 7636 1531 Fax +44 (0)20 7580 3924  
 www.arup.com

Client  
 London Borough of Barnet

Job Title  
 Open Space Audit

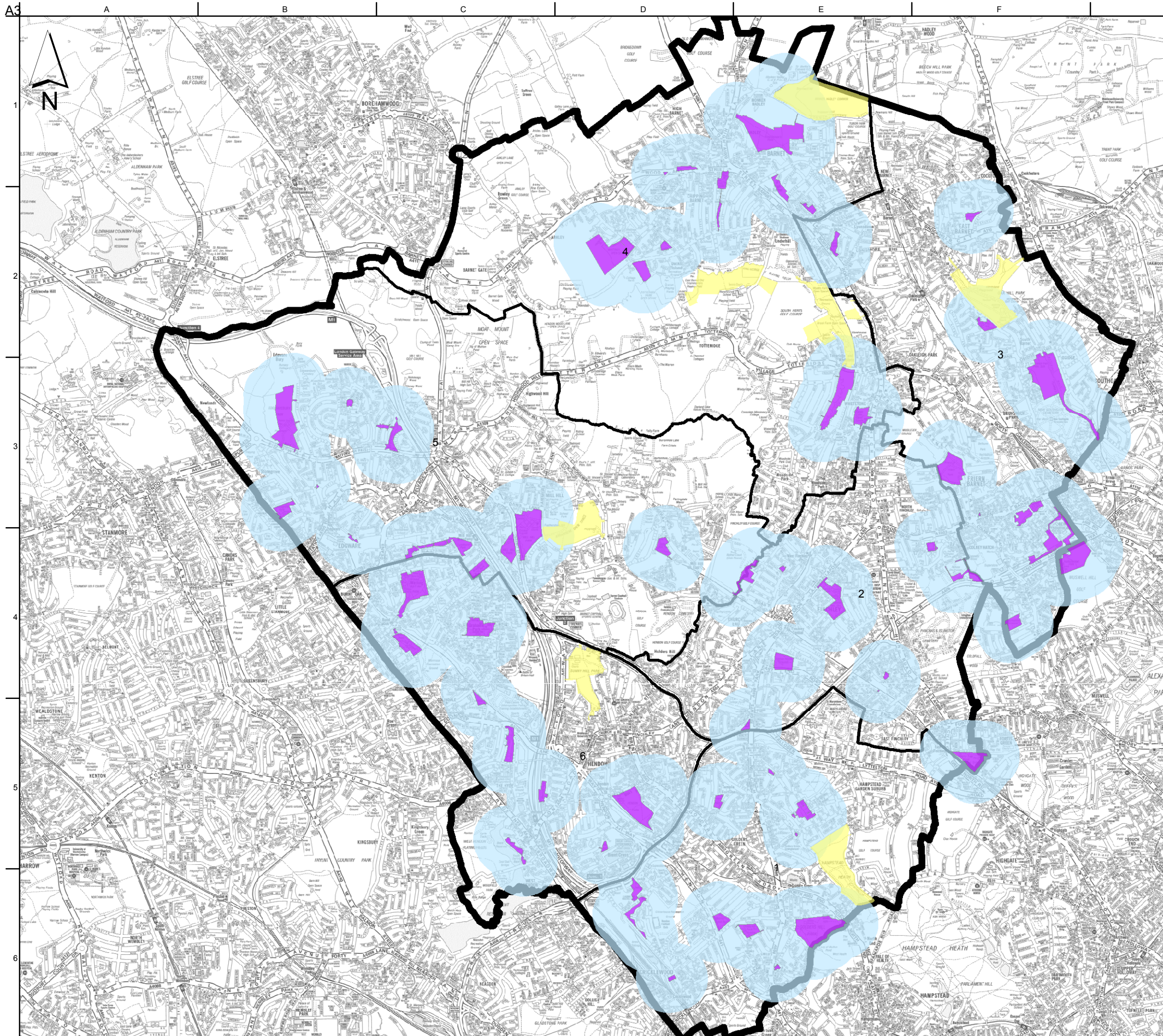
Drawing Title  
 Figure 3  
 Hectares of Park per 1,000 people

Scale at A3  
 1:49,524

Discipline  
 Civil - Planning

Drawing Status  
 Issued

Job No 208654	Drawing No 208654-000	Issue 00
------------------	--------------------------	-------------



- District Park
- Local Park
- Area within 400m of a Local Park
- Ward Groups
- Borough Boundary

-	24-08-2009	XX	XX	XX
Issue	Date	By	Chkd	Appd

**ARUP**  
 13 Fitzroy Street  
 London W1T 4BQ  
 Tel +44 (0)20 7636 1531 Fax +44 (0)20 7580 3924  
 www.arup.com

Client  
 London Borough of Barnet

Job Title  
 Open Space Audit

Drawing Title  
**Figure 4**  
 Area within 400m of a Local Park

Scale at A3  
 1:47,926

Discipline  
 Civil - Planning

Drawing Status  
**Issued**

Job No 208654	Drawing No 208654-000	Issue 00
------------------	--------------------------	-------------